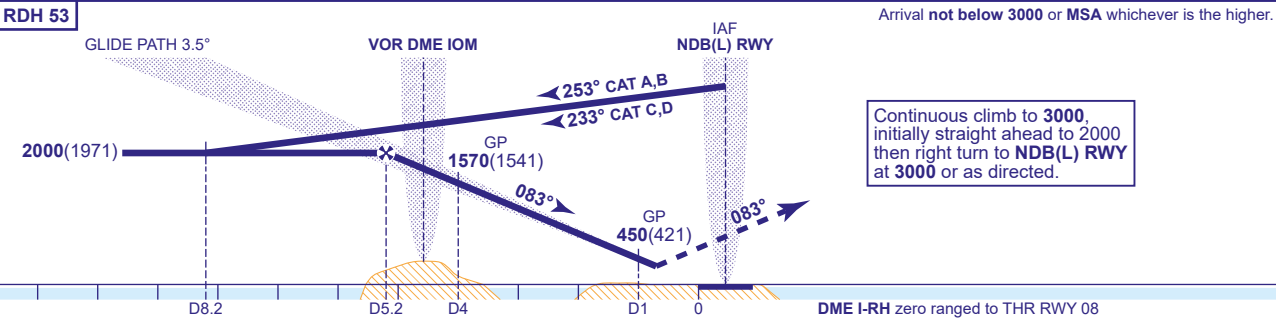


RECOMMENDED PROFILE GLIDE PATH 3.5°, 372FT/NM					
DME I-RH	5	4	3	2	1
ALT(HGT)	1940(1911)	1570(1541)	1190(1161)	820(791)	450(421)



Aircraft Category		A	B	C	D	Rate of descent	G/S KT	160	140	120	100	80
OCA (OCH)	CAT I	320(291)	320(291)	320(291)	320(291)		FT/MIN	990	870	740	620	500
VM(C)OCA (OCH AAL)	Total Area	660(608)	760(708)	1980(1928)	1980(1928)							
	South of RWY 08/26	450(398)	550(498)	830(778)	990(938)							
	East of RWY 03/21	660(608)	670(618)	1190(1138)	1190(1138)							

ALTERNATIVE PROCEDURE EXTENDED HOLDING PATTERN
From IOM VOR holding pattern, extend the outbound leg descending to **2000(1971)**. At I-RH DME 9 turn right to establish on the localizer inbound. When established continue as for Full Procedure.

AIRCRAFT UNABLE TO RECEIVE DME I-RH
Advise ATC . Radar Ranges will be passed at 8.2NM outbound and 4NM inbound.

NOTE 1 Aircraft will normally be required to hold not lower than **3000**.
2 FAT offset 3.77° north of RWY 08 C/L.

CHANGE (9/23): VOR/DME IOM AERIAL ELEVATION.